

Chem-Impex International, Inc.

Tel: (630) 766-2112

E-mail: sales@chemimpex.com

Shipping and Correspondence:

935 Dillon Drive

Wood Dale, IL 60191

Fax: (630) 766-2218

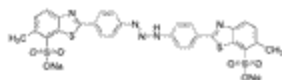
Web site: www.chemimpex.com

Manufacturing site:

825 Dillon Drive

Wood Dale, IL 60191

Product Specifications



Catalogue Number	22891
Product	Thiazole Yellow G (indicator for adsorption and fluorescence) Titan Yellow CI 19540
CAS Number	1829-00-1
Molecular Formula	C ₂₈ H ₁₉ N ₅ Na ₂ O ₆ S ₄
Molecular Weight	695.73
<hr/>	
Appearance	Brownish yellow powder
Solubility	Clear yellow solution (0.1 g in 100 mL distilled water)
Visual Transition Range	pH 12.0 (yellow) to pH 13.0 (red)
Loss on Drying	≤ 8%
Dye content	≥ 65% (Spectrophotometry)
Application	It is used as a reagent for the detection of magnesium. As an acid-base indicator.
Storage	Store at RT

For Laboratory Use Only