

Chem-Impex International, Inc.

Tel: (630) 766-2112

E-mail: sales@chemimpex.com

Shipping and Correspondence:

935 Dillon Drive

Wood Dale, IL 60191

Fax: (630) 766-2218

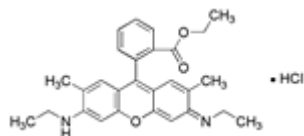
Web site: www.chemimpex.com

Manufacturing site:

825 Dillon Drive

Wood Dale, IL 60191

Product Specifications



Catalogue Number 22885

Product **Rhodamine 6G**

Basic Red 1

CI 45160

CAS Number 989-38-8

Molecular Formula C₂₈H₃₀N₂O₃•HCl

Molecular Weight 479.02

Synonym 3 2-[6-(Ethylamino)-3-(ethylimino)-2,7-dimethyl-3H-xanthene-9-yl] benzoic acid ethyl ester

Appearance Greenish red to red-brown powder

pH 3.5 - 5.0

Assay ≥ 97%

Storage Store at RT

For Laboratory Use Only