

Chem-Impex International, Inc.

Tel: (630) 766-2112

E-mail: sales@chemimpex.com

Shipping and Correspondence:

935 Dillon Drive

Wood Dale, IL 60191

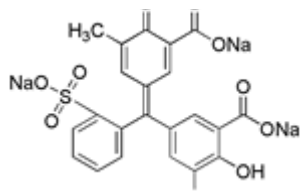
Fax: (630) 766-2218

Web site: www.chemimpex.com

Manufacturing site:

825 Dillon Drive

Wood Dale, IL 60191



Product Specifications

Catalogue Number 22878
Product **Eriochrome Cyanine R**

Mordant Blue 3

CI 43820

CAS Number 3564-18-9

Molecular Formula C₂₃H₁₅Na₃O₉S

Molecular Weight 536.4

Appearance Dark red powder

Solubility 5% in Water / 2% in Ethanol

UV Ratios 435 nm in pH 7 aqueous buffer

Visual Transition Range From pH 1.0 (yellow-orange) to pH 2.0 (red),
From pH 6.0 (red) to pH 7.0 (yellow),
From pH 11.0 (yellow) to pH 12.0 (blue).

Storage Store at RT

For Laboratory Use Only