

# Chem-Impex International, Inc.

---

**Tel:** (630) 766-2112

**E-mail:** sales@chemimpex.com

**Shipping and Correspondence:**

935 Dillon Drive

Wood Dale, IL 60191

**Fax:** (630) 766-2218

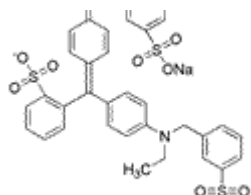
**Web site:** www.chemimpex.com

**Manufacturing site:**

825 Dillon Drive

Wood Dale, IL 60191

---



## Product Specifications

<b>Catalogue Number</b>	22876
<b>Product</b>	<b>Erioglaucine</b>
	Acid Blue 9
	CI 42090
<b>CAS Number</b>	3844-45-9
<b>Molecular Formula</b>	C <sub>37</sub> H <sub>34</sub> N <sub>2</sub> O <sub>9</sub> S <sub>3</sub> •2Na
<b>Molecular Weight</b>	792.86

---

<b>Appearance</b>	Dark blue to purple powder
<b>Heavy Metals</b>	≤ 40.0 mg/Kg (as Pb)
<b>Trace Metal Analysis</b>	Lead (as Pb): ≤ 10 mg/Kg
<b>Arsenic (As<sub>2</sub>O<sub>2</sub>)</b>	≤ 3 mg/Kg
<b>Insoluble material</b>	≤ 0.2%
<b>Related Substances</b>	Subsidiary dyes: ≤ 3.0%
<b>Dye content</b>	≥ 85%
<b>Storage</b>	Store at RT

**For Laboratory Use Only**