

Chem-Impex International, Inc.

Tel: (630) 766-2112

E-mail: sales@chemimpex.com

Shipping and Correspondence:

935 Dillon Drive

Wood Dale, IL 60191

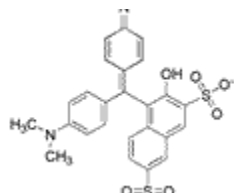
Fax: (630) 766-2218

Web site: www.chemimpex.com

Manufacturing site:

825 Dillon Drive

Wood Dale, IL 60191



Product Specifications

Catalogue Number 22874
Product **Lissamine Green B**

Cyanol green B

CI 44090

CAS Number 3087-16-9

Molecular Formula C₂₇H₂₅N₂O₇S₂Na

Molecular Weight 576.62

Appearance Black to dark red powder

Solubility Clear to very hazy bluish green solution (C=0.1% in Water)

Infrared Spectrum Conforms to structure

Dye content ≥ 80%

Storage Store at RT

For Laboratory Use Only