

Chem-Impex International, Inc.

Tel: (630) 766-2112

E-mail: sales@chemimpex.com

Shipping and Correspondence:

935 Dillon Drive

Wood Dale, IL 60191

Fax: (630) 766-2218

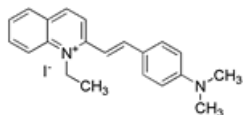
Web site: www.chemimpex.com

Manufacturing site:

825 Dillon Drive

Wood Dale, IL 60191

Product Specifications



Catalogue Number	22872
Product	Quinaldine Red (2-[2-(4-Dimethylamino)phenyl]ethenyl)-1-ethylquinolinium iodide
CAS Number	117-92-0
Molecular Formula	C ₂₁ H ₂₃ N ₂ I
Molecular Weight	430.33

Appearance	Dark green to black powder
Solubility	Clear dark red to purple solution (0.1% in Ethanol)
Infrared Spectrum	Conforms to structure
Visual Transition Range	pH 1.4 (colorless) to pH 3.2 (red)
Dye content	≥ 95%
Storage	Store at RT

For Laboratory Use Only