

Chem-Impex International, Inc.

Tel: (630) 766-2112

E-mail: sales@chemimpex.com

Shipping and Correspondence:

935 Dillon Drive

Wood Dale, IL 60191

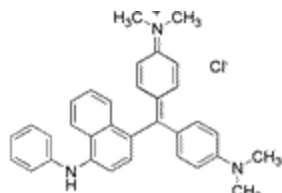
Fax: (630) 766-2218

Web site: www.chemimpex.com

Manufacturing site:

825 Dillon Drive

Wood Dale, IL 60191



Product Specifications

Catalogue Number 22863
Product **Victoria Blue B
for Microscopy**

Basic Blue 26

CI 44045

CAS Number 2580-56-5

Molecular Formula C₃₃H₃₂N₃Cl

Molecular Weight 506.09

Appearance Brown powder

Melting Point 206 °C (dec.)

pH 2.7 ± 0.5

UV Ratios Absorbance at 605.5 nm: Report results

Insoluble ≤ 0.5% (in methanol)

Loss on Drying ≤ 2% (60 °C)

Application Used in the quantitative determination of phospholipids and as a nuclear stain in cytology/histochemical applications.

Storage Store at RT

For Laboratory Use Only