

Chem-Impex International, Inc.

Tel: (630) 766-2112

E-mail: sales@chemimpex.com

Shipping and Correspondence:

935 Dillon Drive

Wood Dale, IL 60191

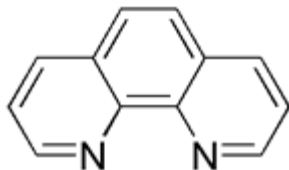
Fax: (630) 766-2218

Web site: www.chemimpex.com

Manufacturing site:

825 Dillon Drive

Wood Dale, IL 60191



Product Specifications

Catalogue Number	22857
Product	1,10-Phenanthroline anhydrous
CAS Number	66-71-7
Molecular Formula	C ₁₂ H ₈ N ₂
Molecular Weight	180.2

Appearance	White to off-white crystalline powder
Solubility	Clear, colorless (1g/10mL of ethanol)
Melting Point	114-119 °C
Loss on Drying	≤ 2.0% (105 °C)
Sulfated Ash	≤ 0.1%
Assay (anhydrous basis)	≥ 99%
Storage	Store at RT

For Laboratory Use Only