

Chem-Impex International, Inc.

Tel: (630) 766-2112

E-mail: sales@chemimpex.com

Shipping and Correspondence:

935 Dillon Drive

Wood Dale, IL 60191

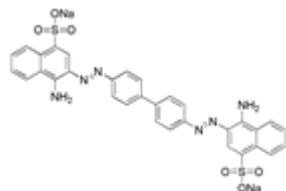
Fax: (630) 766-2218

Web site: www.chemimpex.com

Manufacturing site:

825 Dillon Drive

Wood Dale, IL 60191



Product Specifications

Catalogue Number	22807
Product	Congo Red Direct Red 28 C.I. 22120
CAS Number	573-58-0
Molecular Formula	$C_{32}H_{22}N_6O_6S_2 \cdot 2Na$
Molecular Weight	696.67

Appearance	Red powder
Clarity & Color	To pass test
Solubility	Soluble in water
Visual Transition Range	pH 3.0 (blue) to pH 5.2 (red)
Loss on Drying	$\leq 3.0\%$
Dye content	$\geq 75\%$
Application	pH indicator; nitrogen analysis.
Storage	Store at RT

For Laboratory Use Only