

# Chem-Impex International, Inc.

---

**Tel:** (630) 766-2112

**E-mail:** sales@chemimpex.com

**Shipping and Correspondence:**

935 Dillon Drive

Wood Dale, IL 60191

**Fax:** (630) 766-2218

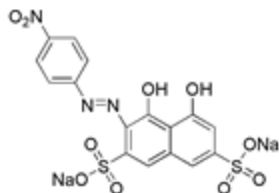
**Web site:** www.chemimpex.com

**Manufacturing site:**

825 Dillon Drive

Wood Dale, IL 60191

---



## Product Specifications

**Catalogue Number** 22802  
**Product** **Chromotrope 2B**

Acid Red 176

CI 16575

**CAS Number** 548-80-1

**Molecular Formula** C<sub>16</sub>H<sub>9</sub>N<sub>3</sub>O<sub>10</sub>S<sub>2</sub>•2Na

**Molecular Weight** 513.37

---

**Appearance** Deep brown crystalline powder

**Solubility** Clear red solution (10 mg/mL in water)

**Loss on Drying** ≤ 4%

**Storage** Store at RT

**Additional Information** λ<sub>max</sub> in water: 515 nm

**For Laboratory Use Only**