

Chem-Impex International, Inc.

Tel: (630) 766-2112

E-mail: sales@chemimpex.com

Shipping and Correspondence:

935 Dillon Drive

Wood Dale, IL 60191

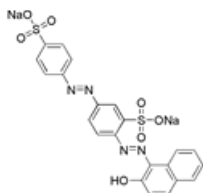
Fax: (630) 766-2218

Web site: www.chemimpex.com

Manufacturing site:

825 Dillon Drive

Wood Dale, IL 60191



Product Specifications

Catalogue Number	22794
Product	Biebrich scarlet sodium salt Acid Red 66 Ponceau BS
CAS Number	4196-99-0
Molecular Formula	C ₂₂ H ₁₄ N ₄ O ₇ S ₂ •2Na
Molecular Weight	556.49
<hr/>	
Appearance	Deep-red to dark brown powder
Solubility	Clear red solution (0.1% distilled Water)
UV Ratios	Absorption λ_{\max} in dist. water : 506 - 510 nm
Loss on Drying	≤ 15% (110 °C, 1h)
Dye content	≥ 70%
Storage	Store at RT
Additional Information	Absorptivity 1% / 1 cm, in dist. water = ≥ 530

For Laboratory Use Only