

Chem-Impex International, Inc.

Tel: (630) 766-2112

E-mail: sales@chemimpex.com

Shipping and Correspondence:

935 Dillon Drive

Wood Dale, IL 60191

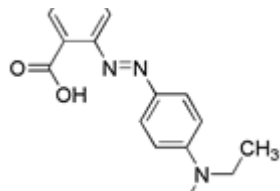
Fax: (630) 766-2218

Web site: www.chemimpex.com

Manufacturing site:

825 Dillon Drive

Wood Dale, IL 60191



Product Specifications

Catalogue Number	22783
Product	Ethyl Red Indicator 4-(Diethylamino)azobenzene-2'-carboxylic acid
CAS Number	76058-33-8
Molecular Formula	C ₁₇ H ₁₉ N ₃ O ₂
Molecular Weight	297.36

Appearance	Dark red to maroon powder
Solubility	Clear, dark red solution (1mg/mL H ₂ O)
UV Ratios	Lambda max. 450 nm in 0.1 N Sodium Hydroxide
Visual Transition Range	From pH 4.5 (red) To pH 6.5 (yellow)
Residue On Ignition	≤ 0.2%
Storage	Store at RT

For Laboratory Use Only