

# Chem-Impex International, Inc.

---

**Tel:** (630) 766-2112

**E-mail:** sales@chemimpex.com

**Shipping and Correspondence:**

935 Dillon Drive

Wood Dale, IL 60191

**Fax:** (630) 766-2218

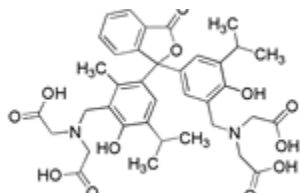
**Web site:** www.chemimpex.com

**Manufacturing site:**

825 Dillon Drive

Wood Dale, IL 60191

---



## Product Specifications

**Catalogue Number** 22776

**Product**

**Thymolphthalein complexone**

3',3''-Bis[*N,N*-di(carboxymethyl)aminomethyl]thymolphthalein

Thymolphthalexone

**CAS Number** 1913-93-5

**Molecular Formula** C<sub>38</sub>H<sub>44</sub>N<sub>2</sub>O<sub>12</sub>

**Molecular Weight** 720.77

---

**Appearance** Off-white powder

**Solubility** Clear solution (0.1% EtOH)

**UV Ratios** Absorptivity 1%/1cm at  $\lambda_{\max}$  601 nm: 585-650

**Loss on Drying**  $\leq$  5% (110 °C)

**Purity by UV**  $\geq$  90%

**Storage** Store at RT

**For Laboratory Use Only**