

Chem-Impex International, Inc.

Tel: (630) 766-2112

E-mail: sales@chemimpex.com

Shipping and Correspondence:

935 Dillon Drive

Wood Dale, IL 60191

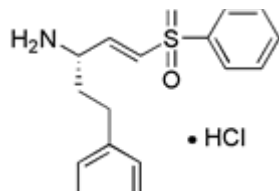
Fax: (630) 766-2218

Web site: www.chemimpex.com

Manufacturing site:

825 Dillon Drive

Wood Dale, IL 60191



Product Specifications

Catalogue Number 22700

Product **(S)-HphVSPH·HCl**

Phenyl (E)-(3S)-3-amino-5-phenylpent-1-enyl sulfone hydrochloride

Molecular Formula C₁₇H₁₉NO₂S•HCl

Molecular Weight 337.86

Appearance White powder

Optical Rotation [α]_D²⁰ = +15 ± 2° (C=1 in MeOH)

Analysis by Mass Spectra [M+H]⁺ = 302 ± 1

Purity by HPLC ≥ 99%

Storage Store at 0-8 °C

For Laboratory Use Only