

# *Chem-Impex International, Inc.*

---

**Tel:** (630) 766-2112

**E-mail:** sales@chemimpex.com

**Shipping and Correspondence:**

935 Dillon Drive

Wood Dale, IL 60191

**Fax:** (630) 766-2218

**Web site:** www.chemimpex.com

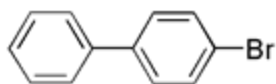
**Manufacturing site:**

825 Dillon Drive

Wood Dale, IL 60191

---

## *Product Specifications*



<b>Catalogue Number</b>	22622
<b>Product</b>	<b>4-Bromobiphenyl</b>
	4-(4'-Bromophenyl)benzene
	4-Bromo-1,1'-biphenyl
<b>CAS Number</b>	92-66-0
<b>Molecular Formula</b>	C <sub>6</sub> H <sub>5</sub> C <sub>6</sub> H <sub>4</sub> Br
<b>Molecular Weight</b>	233.11
<hr/>	
<b>Appearance</b>	White crystal
<b>Melting Point</b>	90-92 °C
<b>Water Content (Karl Fisher)</b>	≤ 0.15%
<b>Loss on Drying</b>	≤ 0.5%
<b>Purity by GC</b>	≥ 98%
<b>Storage</b>	Store at 0-8 °C

**For Laboratory Use Only**