

# Chem-Impex International, Inc.

---

**Tel:** (630) 766-2112

**E-mail:** sales@chemimpex.com

**Shipping and Correspondence:**

935 Dillon Drive

Wood Dale, IL 60191

**Fax:** (630) 766-2218

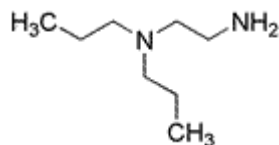
**Web site:** www.chemimpex.com

**Manufacturing site:**

825 Dillon Drive

Wood Dale, IL 60191

---



## Product Specifications

<b>Catalogue Number</b>	22310
<b>Product</b>	<b>2-(Di-n-propylamino)ethylamine</b> n,n-Dipropylethane-1,2-diamine
<b>CAS Number</b>	14165-22-1
<b>Molecular Formula</b>	(n-C <sub>3</sub> H <sub>7</sub> ) <sub>2</sub> N(CH <sub>2</sub> ) <sub>2</sub> NH <sub>2</sub>
<b>Molecular Weight</b>	144.26

---

<b>Appearance</b>	Yellow liquid
<b>Boiling point</b>	186 - 189 °C/760 mmHg
<b><sup>1</sup>H NMR</b>	Conforms to structure
<b>Purity</b>	≥ 95%
<b>GCMS</b>	≥ 99%
<b>Storage</b>	Store at 0 - 8 °C

**For Laboratory Use Only**