

Chem-Impex International, Inc.

Tel: (630) 766-2112

E-mail: sales@chemimpex.com

Shipping and Correspondence:

935 Dillon Drive

Wood Dale, IL 60191

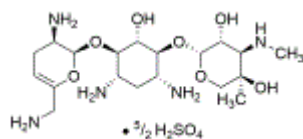
Fax: (630) 766-2218

Web site: www.chemimpex.com

Manufacturing site:

825 Dillon Drive

Wood Dale, IL 60191



Product Specifications

Catalogue Number	22223
Product	Sisomicin sulfate
CAS Number	53179-09-2
Molecular Formula	$\text{C}_{19}\text{H}_{37}\text{N}_5\text{O}_7 \cdot 2.5\text{H}_2\text{SO}_4$
Molecular Weight	692.71

Appearance	White to almost white crystal powder
Optical Rotation	$[\alpha]_{\text{D}}^{20} = +98 - 104^\circ$ (C=1 in water)
Purity by HPLC	$\geq 99\%$
Storage	Store at 0 - 8 °C

For Laboratory Use Only