

# Chem-Impex International, Inc.

---

**Tel:** (630) 766-2112

**E-mail:** sales@chemimpex.com

**Shipping and Correspondence:**

935 Dillon Drive

Wood Dale, IL 60191

**Fax:** (630) 766-2218

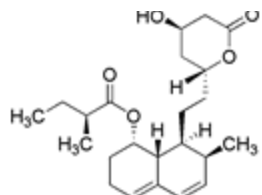
**Web site:** www.chemimpex.com

**Manufacturing site:**

825 Dillon Drive

Wood Dale, IL 60191

---



## Product Specifications

**Catalogue Number** 22163  
**Product** **Mevastatin**

Compactin

ML-236B

**CAS Number** 73573-88-3

**Molecular Formula** C<sub>23</sub>H<sub>34</sub>O<sub>5</sub>

**Molecular Weight** 390.51

---

**Appearance** White to yellowish crystalline powder  
**Melting Point** 151-155 °C  
**Heavy Metals** ≤ 20 ppm  
**Optical Rotation** [α]<sub>D</sub><sup>20</sup> = +280 to +295° (C=0.48 in Acetone)  
**Infrared Spectrum** Conforms to reference  
**Residual Solvents** Acetone: ≤ 2000 ppm  
Toluene: ≤ 890 ppm  
n-Hexane: ≤ 290 ppm  
Ethyl acetate: ≤ 2000 ppm  
**Related Substances** Any specified impurity: ≤ 0.5%  
Any unspecified impurity: ≤ 0.3%  
Total impurity: ≤ 2.0%  
**Residue On Ignition** ≤ 0.2%  
**Purity by HPLC** ≥ 98%  
**Storage** Store at 0-8 °C

**For Laboratory Use Only**