

Chem-Impex International, Inc.

Tel: (630) 766-2112

E-mail: sales@chemimpex.com

Shipping and Correspondence:

935 Dillon Drive

Wood Dale, IL 60191

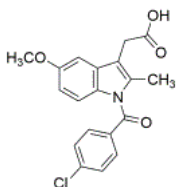
Fax: (630) 766-2218

Web site: www.chemimpex.com

Manufacturing site:

825 Dillon Drive

Wood Dale, IL 60191



Product Specifications

Catalogue Number	22152
Product	Indomethacin 1-(4-Chlorobenzoyl)-5-methoxy-2-methyl-3-indoleacetic acid
CAS Number	53-86-1
Molecular Formula	C ₁₉ H ₁₆ ClNO ₄
Molecular Weight	357.79

Warnings	<i>Light sensitive !</i>
Appearance	White or off-white crystalline powder
Loss on Drying	≤ 0.5%
Related Substances	Any individual unspecified impurity : ≤ 0.10% Total impurities : ≤ 1%
Residue On Ignition	≤ 0.2%
Assay	98 - 102% (On dried basis)
Storage	Store at 2 - 8 °C
Additional Information	Identification : A. Infrared Absorption : Conforms to structure B. The retention time of the indomethacin peak of the Sample solution corresponds to that of the Standard solution, as obtained in the Assay

For Laboratory Use Only