

Chem-Impex International, Inc.

Tel: (630) 766-2112

E-mail: sales@chemimpex.com

Shipping and Correspondence:

935 Dillon Drive

Wood Dale, IL 60191

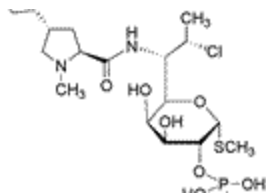
Fax: (630) 766-2218

Web site: www.chemimpex.com

Manufacturing site:

825 Dillon Drive

Wood Dale, IL 60191



Product Specifications

Catalogue Number	22117
Product	Clindamycin 2-phosphate
	Clindamycin 2-dihydrogen phosphate
CAS Number	24729-96-2
Molecular Formula	C ₁₈ H ₃₄ ClN ₂ O ₈ PS
Molecular Weight	504.96

Warnings	Hygroscopic
Appearance	White to off-white crystalline powder
Solubility	Freely soluble in water; slightly soluble in dehydrated alcohol; very slightly soluble in acetone; practically insoluble in chloroform, in benzene, and in ether
Odor	Odorless
Crystallinity	Meets the requirements
Water Content (Karl Fisher)	≤ 6.0%
pH	3.5-4.5
Infrared Spectrum	Conforms to standard
Residual Solvents	Methanol: ≤ 3000 ppm; Ethanol: ≤ 5000 ppm; Acetone: ≤ 5000 ppm; Pyridine: ≤ 200 ppm
Bacterial Endotoxins	≤ 0.58 IU/mg
Related Substances	Lincomycin phosphate: ≤ 1.0%; Lincomycin: ≤ 0.5%; Clindamycin B phosphate : ≤ 1.5%; 7-Epiclindamycin phosphate : ≤ 0.8%; Clindamycin 3-phosphate: ≤ 0.3%; Clindamycin : ≤ 0.5%; Any individual, un-specified impurity : ≤ 1.0%; Total impurities : ≤ 4.0%
Assay (anhydrous basis)	≥ 780 µg/mg
Grade	USP

Product Specifications

Catalog Number: 22117

Storage Store at 0-8 °C

Additional Information Taste: Bitter

For Laboratory Use Only