

Chem-Impex International, Inc.

Tel: (630) 766-2112

E-mail: sales@chemimpex.com

Shipping and Correspondence:

935 Dillon Drive

Wood Dale, IL 60191

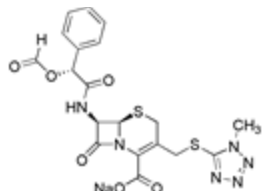
Fax: (630) 766-2218

Web site: www.chemimpex.com

Manufacturing site:

825 Dillon Drive

Wood Dale, IL 60191



Product Specifications

Catalogue Number 22106

Product **Cefamandole nafate**

Cefamandole formate sodium salt

(6*R*,7*R*)-7-(2-Formyloxy-2-phenylacetyl-amino)-3-(1-methyl-1*H*-tetrazol-5-ylsulfanylmethyl)-8-oxo-5-thia-1-aza-bicyclo[4.2.0]oct-2-ene-2-carboxylate sodium

CAS Number 42540-40-9

Appearance White to off-white powder

Water Content (Karl Fisher) $\leq 2.0\%$

pH 3.5-7.0

Bacterial Endotoxins ≤ 0.15 EU/mg

Assay (Anhydrous Basis) 810-1000 ug/mg

Storage Store at 0-8°C

Additional Information Sterility: Conforms to standard
Identification: Conforms to the standard

For Laboratory Use Only