

Chem-Impex International, Inc.

Tel: (630) 766-2112

E-mail: sales@chemimpex.com

Shipping and Correspondence:

935 Dillon Drive

Wood Dale, IL 60191

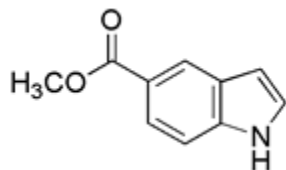
Fax: (630) 766-2218

Web site: www.chemimpex.com

Manufacturing site:

825 Dillon Drive

Wood Dale, IL 60191



Product Specifications

Catalogue Number	22044
Product	Methyl indole-5-carboxylate Indole-5-carboxylic acid methyl ester
CAS Number	1011-65-0
Molecular Formula	C ₁₀ H ₉ NO ₂
Molecular Weight	175.19
<hr/>	
Appearance	Yellowish crystalline powder
Melting Point	126 - 128 °C
Infrared Spectrum	Conforms to structure
Loss on Drying	≤ 0.5%
Residue On Ignition	≤ 0.5%
¹H NMR	Conforms to structure
Purity by HPLC	≥ 99%
Storage	Store at 0 - 8 °C

For Laboratory Use Only