

Chem-Impex International, Inc.

Tel: (630) 766-2112

E-mail: sales@chemimpex.com

Shipping and Correspondence:

935 Dillon Drive

Wood Dale, IL 60191

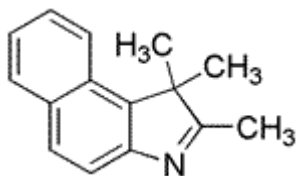
Fax: (630) 766-2218

Web site: www.chemimpex.com

Manufacturing site:

825 Dillon Drive

Wood Dale, IL 60191



Product Specifications

Catalogue Number	22010
Product	2,3,3-Trimethyl-4,5-benzo-3H-indole 1,1,2-Trimethyl-1H-benzo[e]indole 2,3,3-Trimethylnaphtho[1,2-d]pyrrole
CAS Number	41532-84-7
Molecular Formula	C ₁₅ H ₁₅ N
Molecular Weight	209.29

Appearance	Beige to yellowish or yellowish brown crystalline powder
Melting Point	111 - 119 °C
Purity by HPLC	≥ 99%
Storage	Store at 0 - 8 °C

For Laboratory Use Only