

Chem-Impex International, Inc.

Tel: (630) 766-2112

E-mail: sales@chemimpex.com

Shipping and Correspondence:

935 Dillon Drive

Wood Dale, IL 60191

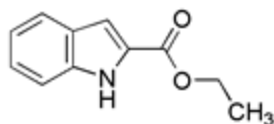
Fax: (630) 766-2218

Web site: www.chemimpex.com

Manufacturing site:

825 Dillon Drive

Wood Dale, IL 60191



Product Specifications

Catalogue Number	21998
Product	Ethyl Indole-2-carboxylate 1 <i>H</i> -Indole-2-carboxylic acid, ethyl ester 2-Carbethoxyindole
CAS Number	3770-50-1
Molecular Formula	C ₁₁ H ₁₁ NO ₂
Molecular Weight	189.21
<hr/>	
Appearance	Off-white to light yellow powder
Melting Point	116-127 °C
Water Content (Karl Fisher)	≤ 0.5%
Assay	≥ 98%
Storage	Store at 0-8 °C

For Laboratory Use Only