

Chem-Impex International, Inc.

Tel: (630) 766-2112

E-mail: sales@chemimpex.com

Shipping and Correspondence:

935 Dillon Drive

Wood Dale, IL 60191

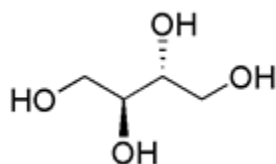
Fax: (630) 766-2218

Web site: www.chemimpex.com

Manufacturing site:

825 Dillon Drive

Wood Dale, IL 60191



Product Specifications

Catalogue Number	21967
Product	<i>meso</i>-Erythritol
	(<i>R,S</i>)-1,2,3,4-butanetetrol
	<i>meso</i> -1,2,3,4-Tetrahydroxybutane
CAS Number	149-32-6
Molecular Formula	C ₄ H ₁₀ O ₄
Molecular Weight	122.12

Appearance	White crystalline powder
Melting Point	119-123 °C
Heavy Metals	≤ 0.5 mg/Kg
Cation	Arsenic (As): ≤ 2.0 mg/Kg
pH	5.0-7.0
Yeast and Mold	≤ 50 cfu/g
Reducing Sugars	≤ 0.3% (as Glucose)
Loss on Drying	≤ 0.2%
Bacterial Endotoxins	≤ 300 count
Coliform Organisms	Not detected
Salmonella	Not detected
Mesh Size	Particle size in 15-80 mesh: ≥ 85%
Related Substances	Ribitol and Glycerol: ≤ 0.1%
Ash	≤ 0.1%
Assay	≥ 99.5% (Dry basis)
Storage	Store at 0-8 °C
Additional Information	Taste and smell: Clear sweet with no unusual smell

Product Specifications

Catalog Number: 21967

For Laboratory Use Only