

Chem-Impex International, Inc.

Tel: (630) 766-2112

E-mail: sales@chemimpex.com

Shipping and Correspondence:

935 Dillon Drive

Wood Dale, IL 60191

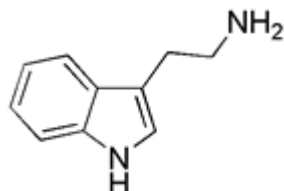
Fax: (630) 766-2218

Web site: www.chemimpex.com

Manufacturing site:

825 Dillon Drive

Wood Dale, IL 60191



Product Specifications

| | |
|--------------------------|---|
| Catalogue Number | 21918 |
| Product | Tryptamine 1 <i>H</i> -Indole-3-ethanamine 3-(2-Aminoethyl)-1 <i>H</i> -indole |
| CAS Number | 61-54-1 |
| Molecular Formula | C ₁₀ H ₁₂ N ₂ |
| Molecular Weight | 160.22 |

| | |
|-----------------------|--|
| Appearance | Pale yellow to white to off-white crystal powder |
| Heavy Metals | ≤ 20 ppm |
| Purity by HPLC | ≥ 99% |
| Storage | Store at RT |

For Laboratory Use Only