

Chem-Impex International, Inc.

Tel: (630) 766-2112

E-mail: sales@chemimpex.com

Shipping and Correspondence:

935 Dillon Drive

Wood Dale, IL 60191

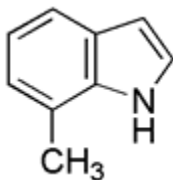
Fax: (630) 766-2218

Web site: www.chemimpex.com

Manufacturing site:

825 Dillon Drive

Wood Dale, IL 60191



Product Specifications

Catalogue Number	21895
Product	7-Methylindole
	7-Methyl-1H-indole
CAS Number	933-67-5
Molecular Formula	C ₉ H ₉ N
Molecular Weight	131.18

Appearance	White powder
Melting Point	79-85 °C
Loss on Drying	≤ 0.5%
Purity by HPLC	≥ 98%
Storage	Store at 0-8°C

For Laboratory Use Only