

Chem-Impex International, Inc.

Tel: (630) 766-2112

E-mail: sales@chemimpex.com

Shipping and Correspondence:

935 Dillon Drive

Wood Dale, IL 60191

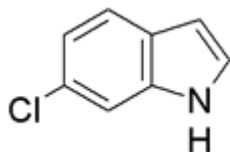
Fax: (630) 766-2218

Web site: www.chemimpex.com

Manufacturing site:

825 Dillon Drive

Wood Dale, IL 60191



Product Specifications

Catalogue Number 21894
Product **6-Chloroindole**

6-Chloro-1H-indole

CAS Number 17422-33-2

Molecular Formula C₈H₆ClN

Molecular Weight 151.6

Appearance Yellow to damask crystalline powder

Melting Point 89-95 °C

Infrared Spectrum Conforms to structure

Loss on Drying ≤ 0.5%

Residue On Ignition ≤ 0.5%

¹H NMR Conforms to structure

Purity by HPLC ≥ 99%

Storage Store at 0-8°C

For Laboratory Use Only