

Chem-Impex International, Inc.

Tel: (630) 766-2112

E-mail: sales@chemimpex.com

Shipping and Correspondence:

935 Dillon Drive

Wood Dale, IL 60191

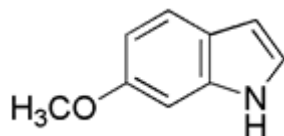
Fax: (630) 766-2218

Web site: www.chemimpex.com

Manufacturing site:

825 Dillon Drive

Wood Dale, IL 60191



Product Specifications

Catalogue Number	21873
Product	6-Methoxyindole
	1H-Indol-6-yl methyl ether
CAS Number	3189-13-7
Molecular Formula	C ₉ H ₉ NO
Molecular Weight	147.18

Appearance	Off-white to pale pink powder
¹H NMR	Conforms to structure
Purity by HPLC	≥ 98%
Storage	Store at 0-8 °C

For Laboratory Use Only