

# *Chem-Impex International, Inc.*

---

**Tel:** (630) 766-2112

**E-mail:** sales@chemimpex.com

**Shipping and Correspondence:**

935 Dillon Drive

Wood Dale, IL 60191

**Fax:** (630) 766-2218

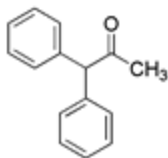
**Web site:** www.chemimpex.com

**Manufacturing site:**

825 Dillon Drive

Wood Dale, IL 60191

---



## *Product Specifications*

<b>Catalogue Number</b>	21838
<b>Product</b>	<b>1,1-Diphenylacetone</b>
	1,1-Diphenyl-2-propanone
	Benzhydryl methyl ketone
<b>CAS Number</b>	781-35-1
<b>Molecular Formula</b>	C <sub>15</sub> H <sub>14</sub> O
<b>Molecular Weight</b>	210.28
<hr/>	
<b>Appearance</b>	White to off-white crystalline powder
<b>Melting Point</b>	59-63 °C
<b>Water Content (Karl Fisher)</b>	≤ 0.5%
<b>Related Substances</b>	Anthracene: ≤ 1.0%
<b>Purity by GC</b>	≥ 99%
<b>Storage</b>	Store at 0-8 °C

**For Laboratory Use Only**