

# Chem-Impex International, Inc.

---

**Tel:** (630) 766-2112

**E-mail:** sales@chemimpex.com

**Shipping and Correspondence:**

935 Dillon Drive

Wood Dale, IL 60191

**Fax:** (630) 766-2218

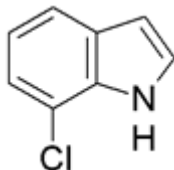
**Web site:** www.chemimpex.com

**Manufacturing site:**

825 Dillon Drive

Wood Dale, IL 60191

---



## Product Specifications

<b>Catalogue Number</b>	21814
<b>Product</b>	<b>7-Chloroindole</b>
	7-Chloro-1H-indole
<b>CAS Number</b>	53924-05-3
<b>Molecular Formula</b>	C <sub>8</sub> H <sub>6</sub> ClN
<b>Molecular Weight</b>	151.6

---

<b>Appearance</b>	Brown crystalline powder
<b>Melting Point</b>	53-59 °C
<b>Infrared Spectrum</b>	Conforms to structure
<b>Loss on Drying</b>	≤ 0.5%
<b>Residue On Ignition</b>	≤ 0.5%
<b><sup>1</sup>H NMR</b>	Conforms to structure
<b>Purity by HPLC</b>	≥ 95%
<b>Storage</b>	Store at 0-8°C

**For Laboratory Use Only**