

# Chem-Impex International, Inc.

---

**Tel:** (630) 766-2112

**E-mail:** sales@chemimpex.com

**Shipping and Correspondence:**

935 Dillon Drive

Wood Dale, IL 60191

**Fax:** (630) 766-2218

**Web site:** www.chemimpex.com

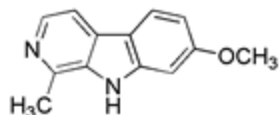
**Manufacturing site:**

825 Dillon Drive

Wood Dale, IL 60191

---

## Product Specifications



|                          |  |
|--------------------------|--|
| <b>Catalogue Number</b>  | 21809  |
| <b>Product</b>           | <b>Harmine</b>                                   |
|                          | 7-Methoxy-1-methyl-9H-pyrido[3,4-b]indole        |
|                          | 6-Methoxyharmame                                 |
| <b>CAS Number</b>        | 442-51-3   |
| <b>Molecular Formula</b> | C <sub>13</sub> H <sub>12</sub> N <sub>2</sub> O |
| <b>Molecular Weight</b>  | 212.25   |

---

|                                    |  |
|------------------------------------|--|
| <b>Appearance</b>                  | White to off-white crystalline powder              |
| <b>Solubility</b>                  | Colorless solution (1% in chloroform/methanol 2:1) |
| <b>Turbidity</b>                   | ≤ 4.0 NTU (1% in chloroform/methanol 2:1)          |
| <b>Melting Point</b>               | 262-270 °C   |
| <b>Water Content (Karl Fisher)</b> | ≤ 0.5%   |
| <b>Infrared Spectrum</b>           | Conforms to structure                              |
| <b>Assay by titration</b>          | ≥ 99%  |
| <b>Purity by GC</b>                | ≥ 99%  |
| <b>Storage</b>                     | Store at 0-8 °C                                    |

**For Laboratory Use Only**