

Chem-Impex International, Inc.

Tel: (630) 766-2112

E-mail: sales@chemimpex.com

Shipping and Correspondence:

935 Dillon Drive

Wood Dale, IL 60191

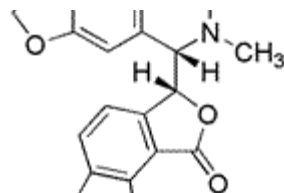
Fax: (630) 766-2218

Web site: www.chemimpex.com

Manufacturing site:

825 Dillon Drive

Wood Dale, IL 60191



Product Specifications

Catalogue Number	21755
Product	(+)-Bicuculline (6 <i>R</i>)-6-[(5 <i>S</i>)-5,6,7,8-Tetrahydro-6-methyl-1,3-dioxolo[4,5- <i>g</i>]
CAS Number	485-49-4
Molecular Formula	C ₂₀ H ₁₇ NO ₆
Molecular Weight	367.36

Warnings	Air sensitive!
Appearance	White to pale yellow powder
Melting Point	195 - 199 °C
Optical Rotation	$\alpha^{20}_{\text{D}} = 127 \text{ to } 132^{\circ}$ (C=1 in CHCl ₃)
UV Ratios	$\lambda_{\text{max}} = 325 \text{ nm}$
Loss on Drying	≤ 0.5%
Purity by HPLC	≥ 98%
Storage	Store at 0 - 8 °C

For Laboratory Use Only