

# Chem-Impex International, Inc.

Tel: (630) 766-2112

E-mail: sales@chemimpex.com

Shipping and Correspondence:

935 Dillon Drive

Wood Dale, IL 60191

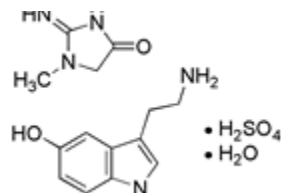
Fax: (630) 766-2218

Web site: www.chemimpex.com

Manufacturing site:

825 Dillon Drive

Wood Dale, IL 60191



## Product Specifications

<b>Catalogue Number</b>	21734
<b>Product</b>	<b>Serotonin creatinine sulfate monohydrate</b>  3-(2-Aminoethyl)-5-hydroxyindole creatinine sulfate monohydrate  3-2-Aminoethyl-5-hydroxyindole serotonin monohydrate
<b>CAS Number</b>	61-47-2
<b>Molecular Formula</b>	C <sub>10</sub> H <sub>12</sub> N <sub>2</sub> O•C <sub>4</sub> H <sub>7</sub> N <sub>3</sub> O•H <sub>2</sub> O•H <sub>2</sub> SO <sub>4</sub>
<b>Molecular Weight</b>	405.43
<b>Appearance</b>	Off-white powder
<b>Appearance of Solution</b>	Colorless (1% aqueous solution)
<b>Turbidity</b>	max 4.0 NTU (1% aqueous solution)
<b>Melting Point</b>	218-222°C
<b>Water Content (Karl Fisher)</b>	3.4-5.4%
<b>TLC System</b>	Conforms to standard
<b>Infrared Spectrum</b>	Conforms to standard
<b>Sulfated Ash</b>	≤ 0.05%
<b>Assay by titration</b>	99.0-101.0% (NaOH titration, 0.1 M)
<b>Storage</b>	Store at 0-8°C
<b>Additional Information</b>	5-hydroxy tryptamine: 43.2-47.8% (HPLC) Creatinine: 27.7-30.7% (HPLC) Specific absorbance (1% 1 cm): 145.0-155.0 (0.5 g/L in 0.1 M HCl at 275 nm)

# *Product Specifications*

Catalog Number: 21734

---

**For Laboratory Use Only**