

Chem-Impex International, Inc.

Tel: (630) 766-2112

E-mail: sales@chemimpex.com

Shipping and Correspondence:

935 Dillon Drive

Wood Dale, IL 60191

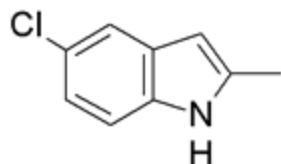
Fax: (630) 766-2218

Web site: www.chemimpex.com

Manufacturing site:

825 Dillon Drive

Wood Dale, IL 60191



Product Specifications

Catalogue Number 21712
Product **5-Chloro-2-methylindole**

2-Methyl-5-chloroindole

CAS Number 1075-35-0

Molecular Formula C₉H₈ClN

Molecular Weight 165.62

Appearance Beige-brown powder

¹H NMR Conforms to structure

Assay ≥ 98%

Storage Store at 0-8 °C

For Laboratory Use Only