

Chem-Impex International, Inc.

Tel: (630) 766-2112

E-mail: sales@chemimpex.com

Shipping and Correspondence:

935 Dillon Drive

Wood Dale, IL 60191

Fax: (630) 766-2218

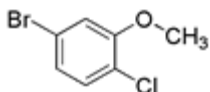
Web site: www.chemimpex.com

Manufacturing site:

825 Dillon Drive

Wood Dale, IL 60191

Product Specifications



Catalogue Number 21663
Product **5-Bromo-2-chloroanisole**

4-Chloro-3-methoxybromobenzene

4-Bromo-1-chloro-2-methoxybenzene

CAS Number 16817-43-9

Molecular Formula C₇H₆BrClO

Molecular Weight 221.48

Appearance Light yellow liquid or crystal

Water Content (Karl Fisher) ≤ 0.5%

Purity by HPLC ≥ 98%

Storage Store at 0-8°C

For Laboratory Use Only