

Chem-Impex International, Inc.

Tel: (630) 766-2112

E-mail: sales@chemimpex.com

Shipping and Correspondence:

935 Dillon Drive

Wood Dale, IL 60191

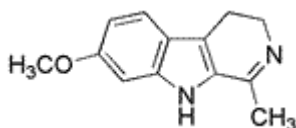
Fax: (630) 766-2218

Web site: www.chemimpex.com

Manufacturing site:

825 Dillon Drive

Wood Dale, IL 60191



Product Specifications

Catalogue Number	21617
Product	Harmaline 1-Methyl-7-methoxy-3,4-dihydro-β-carboline 3,4-Dihydro-7-methoxy-1-methyl-9H-pyrido[3,4-b]indole
CAS Number	304-21-2
Molecular Formula	C ₁₃ H ₁₄ N ₂ O
Molecular Weight	214.27

Appearance	Off-white to light brown powder
Solubility	Clear solution in DMSO
Melting Point	230 - 236 °C
Water Content (Karl Fisher)	≤ 1%
¹H NMR	Conforms to structure
Purity by HPLC	≥ 98%
Storage	Store at 0 - 8 °C

For Laboratory Use Only