

Chem-Impex International, Inc.

Tel: (630) 766-2112

E-mail: sales@chemimpex.com

Shipping and Correspondence:

935 Dillon Drive

Wood Dale, IL 60191

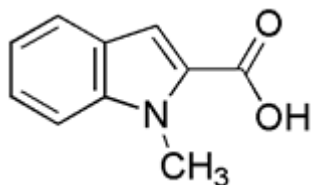
Fax: (630) 766-2218

Web site: www.chemimpex.com

Manufacturing site:

825 Dillon Drive

Wood Dale, IL 60191



Product Specifications

Catalogue Number	21571
Product	1-Methylindole-2-carboxylic acid 1-Methyl-1H-indole-2-carboxylic acid
CAS Number	16136-58-6
Molecular Formula	C ₁₀ H ₉ NO ₂
Molecular Weight	175.19

Appearance	Pale yellow to white solid
Melting Point	204-214° C
Assay by titration	≥ 98%
Storage	Store at 0-8°C

For Laboratory Use Only