

Chem-Impex International, Inc.

Tel: (630) 766-2112

E-mail: sales@chemimpex.com

Shipping and Correspondence:

935 Dillon Drive

Wood Dale, IL 60191

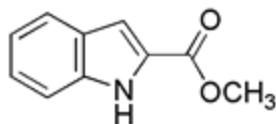
Fax: (630) 766-2218

Web site: www.chemimpex.com

Manufacturing site:

825 Dillon Drive

Wood Dale, IL 60191



Product Specifications

Catalogue Number	21561
Product	Methyl indole-2-carboxylate
	1H-Indole-2-carboxylic acid methyl ester
CAS Number	1202-04-6
Molecular Formula	C ₁₀ H ₉ NO ₂
Molecular Weight	175.19

Appearance	Off-white to pinkish powder
¹H NMR	Conforms to structure
Assay	≥ 98%
Storage	Store at 0-8 °C

For Laboratory Use Only