

Chem-Impex International, Inc.

Tel: (630) 766-2112

E-mail: sales@chemimpex.com

Shipping and Correspondence:

935 Dillon Drive

Wood Dale, IL 60191

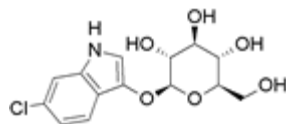
Fax: (630) 766-2218

Web site: www.chemimpex.com

Manufacturing site:

825 Dillon Drive

Wood Dale, IL 60191



Product Specifications

Catalogue Number 21531
Product **6-Chloro-3-indolyl-β-D-galactopyranoside**

6-Chloro-3-(β-D-galactopyranosyloxy)indole

CAS Number 138182-21-5

Molecular Formula C₁₄H₁₆ClNO₆

Molecular Weight 329.73

Appearance White powder

Solubility Clear and colorless solution (1% in Methanol)

Water Content (Karl Fisher) ≤ 0.5%

Optical Rotation [α]_D²⁰ = -47 ± 2° (C=1 in MeOH)

¹H NMR Conforms to structure

Purity by TLC ≥ 98%

Application It is a substrate for β-Galactosidase and used as an alternative to X-Gal, for the enzyme activity detection in lac⁺ bacterial colonies.

Storage Store at 0-8 °C

For Laboratory Use Only