

# Chem-Impex International, Inc.

---

**Tel:** (630) 766-2112

**E-mail:** sales@chemimpex.com

**Shipping and Correspondence:**

935 Dillon Drive

Wood Dale, IL 60191

**Fax:** (630) 766-2218

**Web site:** www.chemimpex.com

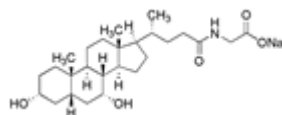
**Manufacturing site:**

825 Dillon Drive

Wood Dale, IL 60191

---

## Product Specifications



<b>Catalogue Number</b>	21506
<b>Product</b>	<b>Sodium glycochenodeoxycholate</b> Glycochenodeoxycholic acid sodium salt
<b>CAS Number</b>	16564-43-5
<b>Molecular Formula</b>	C <sub>26</sub> H <sub>42</sub> NNaO <sub>5</sub>
<b>Molecular Weight</b>	471.61

---

<b>Appearance</b>	White or almost white crystalline powder
<b>Clarity &amp; Color</b>	Colorless to light yellow transparent solution
<b>Heavy Metals</b>	≤ 10 ppm
<b>Water Content (Karl Fisher)</b>	≤ 8%
<b>pH</b>	7 - 9
<b>Purity by HPLC</b>	≥ 99%
<b>Storage</b>	Store at 0 - 8 °C

**For Laboratory Use Only**