

Chem-Impex International, Inc.

Tel: (630) 766-2112

E-mail: sales@chemimpex.com

Shipping and Correspondence:

935 Dillon Drive

Wood Dale, IL 60191

Fax: (630) 766-2218

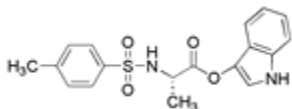
Web site: www.chemimpex.com

Manufacturing site:

825 Dillon Drive

Wood Dale, IL 60191

Product Specifications



Catalogue Number 21454
Product ***N*-Tosyl-L-alanyloxyindole**

N-Tosyl-L-alanine 3-indoxyl ester

CAS Number 75062-54-3

Molecular Formula C₁₈H₁₈N₂O₄S

Molecular Weight 358.42

Appearance Greyish white powder

Melting Point 100 - 104 °C

Purity by HPLC ≥ 99%

Storage Store at 0-8°C

For Laboratory Use Only