

Chem-Impex International, Inc.

Tel: (630) 766-2112

E-mail: sales@chemimpex.com

Shipping and Correspondence:

935 Dillon Drive

Wood Dale, IL 60191

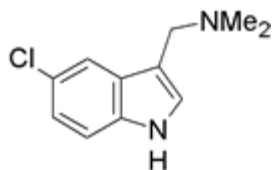
Fax: (630) 766-2218

Web site: www.chemimpex.com

Manufacturing site:

825 Dillon Drive

Wood Dale, IL 60191



Product Specifications

Catalogue Number	21391
Product	5-Chloro-3-(dimethylaminomethyl)indole
	5-Chloro-3-(dimethylaminomethyl)indole
CAS Number	830-94-4
Molecular Formula	C ₁₁ H ₁₃ ClN ₂
Molecular Weight	208.69
Appearance	White to off-white crystalline powder
Infrared Spectrum	Conforms to structure
¹H NMR	Conforms to structure
Purity by HPLC	≥ 98%
Storage	Store at 0-8 °C

For Laboratory Use Only