

Chem-Impex International, Inc.

Tel: (630) 766-2112

E-mail: sales@chemimpex.com

Shipping and Correspondence:

935 Dillon Drive

Wood Dale, IL 60191

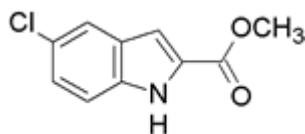
Fax: (630) 766-2218

Web site: www.chemimpex.com

Manufacturing site:

825 Dillon Drive

Wood Dale, IL 60191



Product Specifications

Catalogue Number	21310
Product	5-Chloroindole-2-carboxylic acid methyl ester 5-Chloro-1H-indole-2-carboxylic acid methyl ester Methyl 5-chloroindole-2-carboxylate
CAS Number	87802-11-7
Molecular Formula	C ₁₀ H ₈ ClNO ₂
Molecular Weight	209.63

Appearance	Slightly off-white crystalline powder
Solubility	Colorless to slightly yellow solution (2% in Acetone)
Melting Point	215-219 °C
Water Content (Karl Fisher)	≤ 0.5%
TLC System	1-Propanol/Ammonia/Water (8:1:1); Silica gel, 50 mg in 3 mL Acetone; UV 254 nm, van Urk reagent
Infrared Spectrum	Conforms to structure
Purity by GC	≥ 99%
Purity by TLC	Silica gel, 50 mg in 3 mL acetone 1-propanol/ammonia/water (8:1:1) UV 254 nm, Van Urk Reagent
Storage	Store at 0-8°C

For Laboratory Use Only