

# Chem-Impex International, Inc.

---

**Tel:** (630) 766-2112

**E-mail:** sales@chemimpex.com

**Shipping and Correspondence:**

935 Dillon Drive

Wood Dale, IL 60191

**Fax:** (630) 766-2218

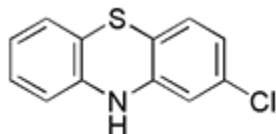
**Web site:** www.chemimpex.com

**Manufacturing site:**

825 Dillon Drive

Wood Dale, IL 60191

---



## Product Specifications

**Catalogue Number** 21262  
**Product** **2-Chlorophenothiazine**

2-Chloro-10*H*-phenothiazine

2-Chlorothiodiphenylamine

**CAS Number** 92-39-7

**Molecular Formula** C<sub>12</sub>H<sub>8</sub>ClNS

**Molecular Weight** 233.72

---

**Appearance** Grey colored powder

**Solubility** Soluble in acetone, water

**Melting Point** 196-203 °C

**Loss on Drying** ≤ 0.5%

**Related Substances** Phenothiazine: ≤ 0.25%  
Total impurities: ≤ 0.5%

**Sulfated Ash** ≤ 0.2%

**Purity by HPLC** ≥ 99%

**Storage** Store at 0-8 °C

**For Laboratory Use Only**