

# Chem-Impex International, Inc.

---

Tel: (630) 766-2112

E-mail: sales@chemimpex.com

Shipping and Correspondence:

935 Dillon Drive

Wood Dale, IL 60191

Fax: (630) 766-2218

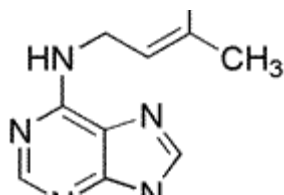
Web site: www.chemimpex.com

Manufacturing site:

825 Dillon Drive

Wood Dale, IL 60191

---



## Product Specifications

Catalogue Number	21213
Product	<b>6-(3,3-dimethylallylamino)purine</b> <i>N</i> <sup>6</sup> -(2-isopentenyl)adenine <i>N</i> -Isopentenyladenine
CAS Number	2365-40-4
Molecular Formula	C <sub>10</sub> H <sub>13</sub> N <sub>5</sub>
Molecular Weight	203.25

---

Appearance	White to off-white crystalline powder
Melting Point	212 - 218 °C
Elemental Analysis (Theory)	C = 57.92 - 60.28%, H = 6.32 - 6.44%, N = 33.77 - 35.15%
<sup>1</sup> H NMR	Conforms to structure
Purity by HPLC	≥ 99%
Storage	Store at -20 °C

**For Laboratory Use Only**