

Chem-Impex International, Inc.

Tel: (630) 766-2112

E-mail: sales@chemimpex.com

Shipping and Correspondence:

935 Dillon Drive

Wood Dale, IL 60191

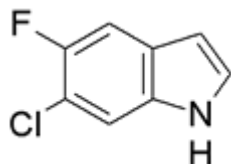
Fax: (630) 766-2218

Web site: www.chemimpex.com

Manufacturing site:

825 Dillon Drive

Wood Dale, IL 60191



Product Specifications

Catalogue Number	21211
Product	6-Chloro-5-fluoroindole
CAS Number	122509-72-2
Molecular Formula	C ₈ H ₅ ClFN
Molecular Weight	169.59

Appearance	White to brown solid
¹H NMR	Conforms to structure
Purity by HPLC	≥ 96%
Storage	Store at 0-8 °C

For Laboratory Use Only