

Chem-Impex International, Inc.

Tel: (630) 766-2112

E-mail: sales@chemimpex.com

Shipping and Correspondence:

935 Dillon Drive

Wood Dale, IL 60191

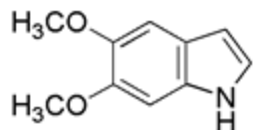
Fax: (630) 766-2218

Web site: www.chemimpex.com

Manufacturing site:

825 Dillon Drive

Wood Dale, IL 60191



Product Specifications

Catalogue Number 21180
Product **5,6-Dimethoxyindole**

5,6-Dimethoxy-1*H*-indole

CAS Number 14430-23-0

Molecular Formula C₁₀H₁₁NO₂

Molecular Weight 177.2

Appearance White to off-white crystalline powder

Melting Point 152-159 °C

Infrared Spectrum Conforms to structure

¹H NMR Conforms to structure

Purity by HPLC ≥ 98%

Storage Store at 0-8 °C

For Laboratory Use Only