

Chem-Impex International, Inc.

Tel: (630) 766-2112

E-mail: sales@chemimpex.com

Shipping and Correspondence:

935 Dillon Drive

Wood Dale, IL 60191

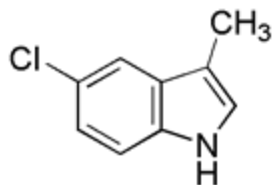
Fax: (630) 766-2218

Web site: www.chemimpex.com

Manufacturing site:

825 Dillon Drive

Wood Dale, IL 60191



Product Specifications

Catalogue Number 21014

Product **5-Chloro-3-methylindole**

CAS Number 71095-42-6

Molecular Formula C₉H₈ClN

Molecular Weight 165.62

Appearance Slightly red-brown crystalline powder

Solubility Clear colorless to light brownish-yellow solution (1% in Acetone)

Melting Point 70-74 °C

Water Content (Karl Fisher) ≤ 0.5%

TLC System Toluene/Acetone (5:1); 100 mg in 3 ml of acetone; UV 254 nm, van Urk reagent

Infrared Spectrum Conforms to structure

Purity by GC ≥ 96%

Storage Store at 0-8 °C

For Laboratory Use Only