

Chem-Impex International, Inc.

Tel: (630) 766-2112

E-mail: sales@chemimpex.com

Shipping and Correspondence:

935 Dillon Drive

Wood Dale, IL 60191

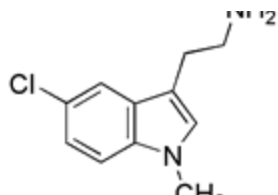
Fax: (630) 766-2218

Web site: www.chemimpex.com

Manufacturing site:

825 Dillon Drive

Wood Dale, IL 60191



Product Specifications

Catalogue Number	21013
Product	2-(5-Chloro-1-methyl-1H-indol-3-yl) ethylamine 3-(2-Aminoethyl)-5-chloro-1-methylindole 5-Chloro-1-methyltryptamine
Molecular Formula	C ₁₁ H ₁₃ ClN ₂
Molecular Weight	208.69
Appearance	Brown solid
Purity	≥ 95% (NMR)
Storage	Store at 0-8°C

For Laboratory Use Only